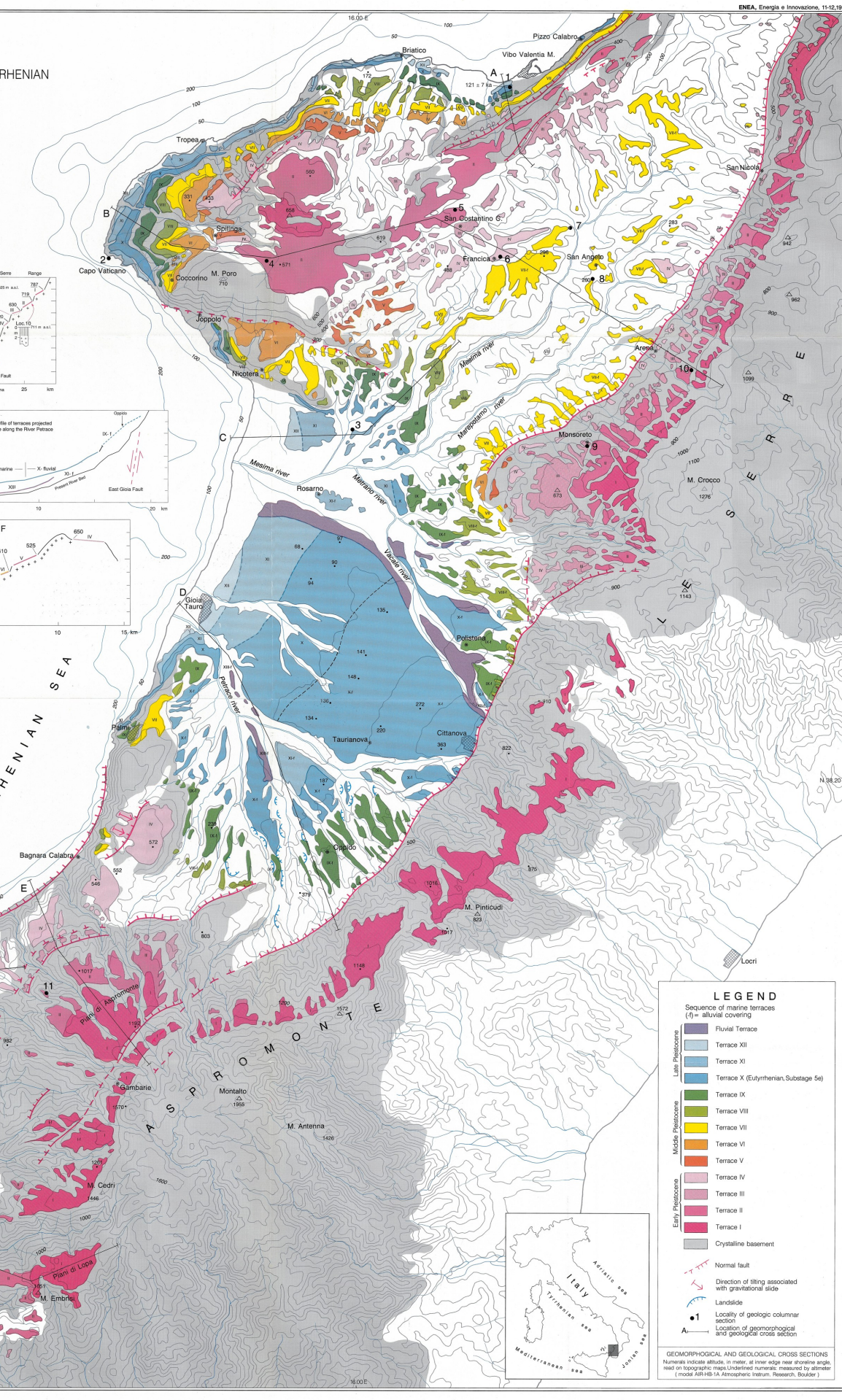
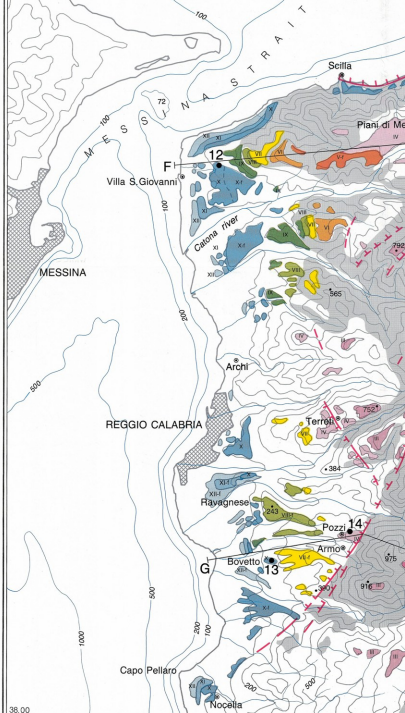
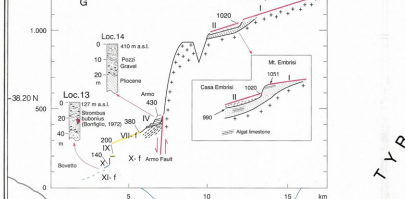
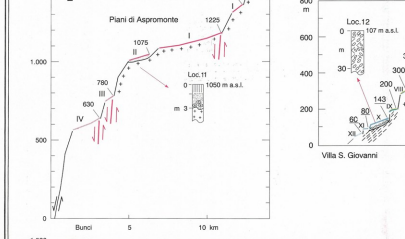
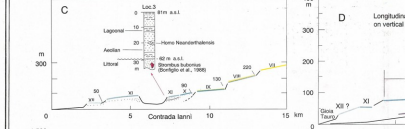
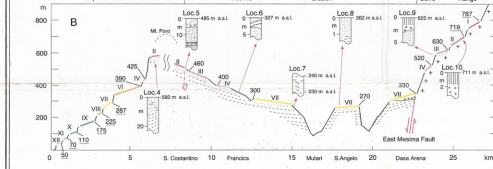
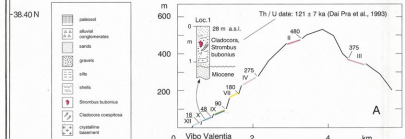




PLEISTOCENE MARINE TERRACES OF THE TYRRHENIAN COAST OF SOUTHERN CALABRIA

T. MIYAUCHI, G. DAI PRA, S. SYLOS LABINI

Scale 1: 100 000



LEGEND

Sequence of marine terraces
(-) = alluvial covering

- Early Pleistocene
 - Terrace I
 - Terrace II
 - Terrace III
 - Terrace IV
- Middle Pleistocene
 - Terrace V
 - Terrace VI
 - Terrace VII
 - Terrace VIII
 - Terrace IX
 - Terrace X (Eurythenian, Substage 5e)
 - Terrace XI
 - Terrace XII
- Late Pleistocene
 - Fluvial Terrace
- Crystalline basement

- - - - - Normal fault
 Direction of tilting associated with gravitational slide
 Landslide
 Locality of geologic columnar section
 Location of geomorphological and geological cross section

GEOMORPHOLOGICAL AND GEOLOGICAL CROSS SECTIONS
 Numerical values indicate, in meters, the lower edge near erasine angle, read on topographic maps. Underlined numerical values measured by altimeter (model ARH-18/1A Atmospheric Instrum. Research, Boulder).