

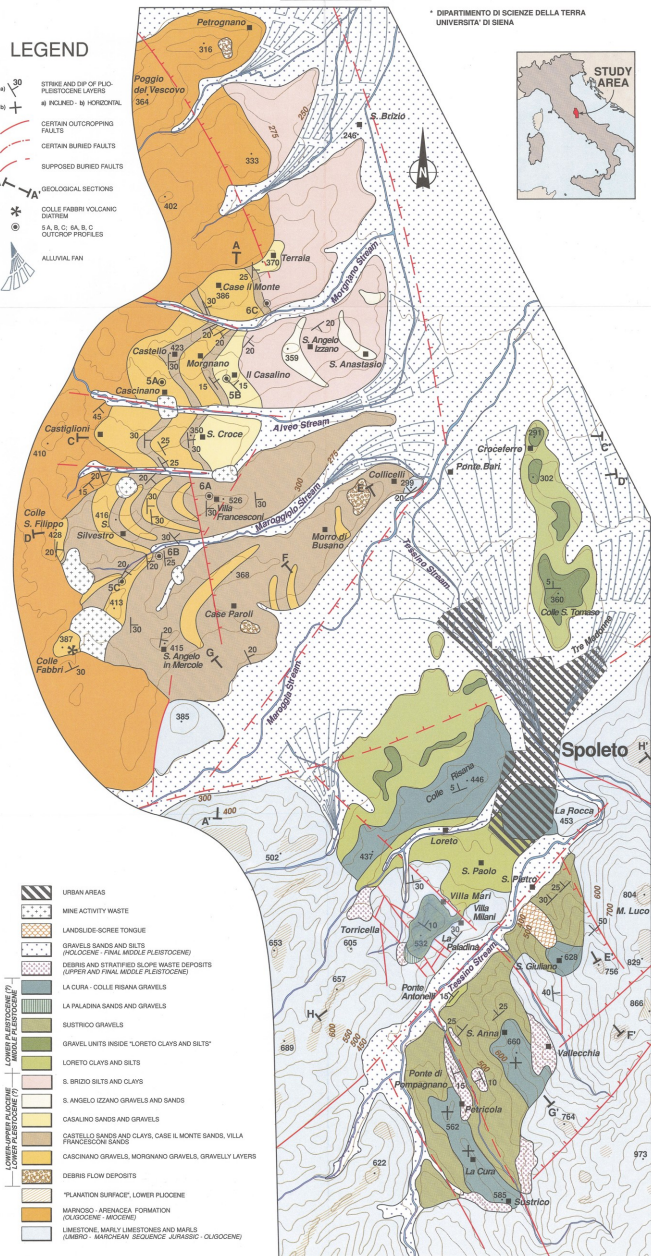
# COLTORTI MAURO\* - PIERUCCINI PIERLUIGI\* PLIO - PLEISTOCENE SEDIMENTS IN THE SPOLETO BASIN (CENTRAL ITALY)

0 1 Km

\* DIPARTIMENTO DI SCIENZE DELLA TERRA  
UNIVERSITA' DI SIENA

## LEGEND

- 30 STRIKE AND DIP OF PLIO-  
PLEISTOCENE LAYERS
- 45 INCLINED - 45 HORIZONTAL
- CERTAIN OUTCROPPING FAULTS
- CERTAIN BURIED FAULTS
- SUPPOSED BURIED FAULTS
- GEOLOGICAL SECTIONS
- COLLE FABBRI VOLCANIC  
DIATREM
- 5A, B, C; 5A, B, C  
OUTCROP PROFILES
- ALLUVIAL FAN



- URBAN AREAS
- MINE ACTIVITY WASTE
- LANDSLIDE-SCREE TONGUE
- GRAVELS SANDS AND SILTS  
(Pliocene - Final Middle Pleistocene)
- DEBRIS AND STRATIFIED SLOPE WASTE DEPOSITS  
(Upper and Final Middle Pleistocene)
- LA CURA - COLLE RISANA GRAVELS
- LA PALADINA SANDS AND GRAVELS
- SUSTRICO GRAVELS
- GRAVEL UNITS INSIDE "LORETO CLAYS AND SILTS"
- LORETO CLAYS AND SILTS
- S. BRIZIO SILTS AND CLAYS
- S. ANGELO IZZANO GRAVELS AND SANDS
- CASALINO SANDS AND GRAVELS
- CASTELLO SANDS AND CLAYS, CASE IL MONTE SANDS, VILLA  
FRANCESCO SANDS
- CASCINANO GRAVELS, MORGANO GRAVELS, GRAVELLY LAYERS
- DEBRIS FLOW DEPOSITS
- "PLANATION SURFACE", LOWER Pliocene
- MARNOSO - ARENACEA FORMATION  
(Oligocene - Miocene)
- LIMESTONE, MARLY LIMESTONES AND MARLS  
(UMBRO - MARCHEM SEQUENCE JURASSIC - Oligocene)