

DISTRIBUZIONE DEI TERRAZZI MARINI E TRANSIZIONALI (OLOCENE) E CARTA GEOMORFOLOGICA DELLA FASCIA COSTIERA TRA SENO OTWAY E BAHIA SHOAL - PATAGONIA - STRETTO DI MAGELLANO - CILE

DISTRIBUTION OF THE MARINE AND TRANSITIONAL TERRACES (HOLOCENE) AND GEOMORPHOLOGICAL MAP OF THE COASTAL AREA BETWEEN SENO OTWAY AND BAHIA SHOAL, PATAGONIA - STRAITS OF MAGELLAN - CHILE

'ANGELO DI GRANDE', 'SANDRO DE MURO', 'ANTONIO BRAMBATI' Dipartimento di Scienze Geologiche, Ambientali e Marine, Via Edmondo Weiss, n. 2 - 34127 Trieste Istituto di Geologia e Geofisica, Corso Italia, n. 55 - 35129 Catania



Con la collaborazione di (in collaboration with): Alberto Marin, Ramon Saenz-Lobos, Roberto Cordero, and other researchers.

Gli studi fino ad oggi condotti sulla costa di Magellano dal Dipartimento di Scienze Geologiche, Ambientali e Marine dell'Università di Trieste, nell'ambito del Programma Nazionale di Ricerche in Antartide (P.N.R.A.)...

Finalis studies carried out by the Department of Geological, Environmental and Marine Science of the University of Trieste within the Programme Nazionale di Ricerche in Antartide (P.N.R.A.)...

The eastern coast of Seno Otway (Sheet 68) shows a more complete terraced sequence, especially in front of the lagoon which gives witness to a more tectonically uplifted...

Key words: Coastal Geomorphology, Quaternary Geology, Sedimentology, Paleolimnology, Marine Geology, Holocene, Magellano, Hekman, Magellan Straits, Patagonic Area.

Table with 2 columns: FORME E DEPOSITI MARINI E TRANSIZIONALI (MARINE AND TRANSITIONAL LANDFORMS AND DEPOSITS) and FORME E DEPOSITI LEGATI AL GIACCAIUMO ANTICO (ANCIENT GLACIAL LANDFORMS AND DEPOSITS). It lists various geological features and their descriptions.

Table with 2 columns: FORME E DEPOSITI EOLICI (EOLIAN LANDFORMS AND DEPOSITS) and FORME E DEPOSITI D'ACQUA FREDDA (COLD WATER LANDFORMS, PROCESSES AND DEPOSITS). It lists various geological features and their descriptions.

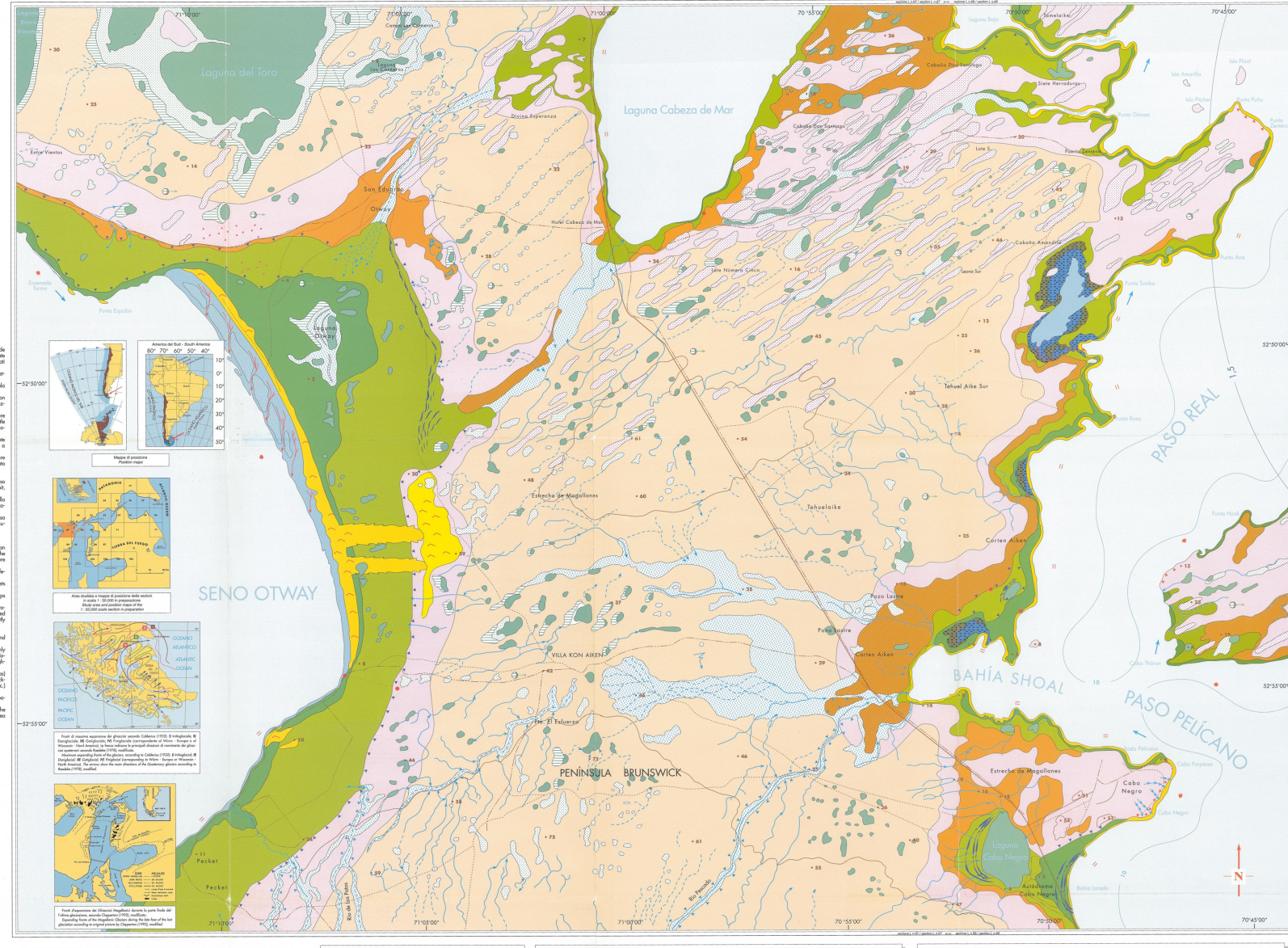


Table with 2 columns: DINAMICA ATTUALE DELLA COSTA (PRESENT DYNAMICS OF THE COAST) and INFORMAZIONI AGGIUNTE (ADDITIONAL INFORMATION). It provides details on coastal dynamics and additional information.

Table with 2 columns: BIBLIOGRAFIA (BIBLIOGRAPHY) and CENSI STRATIGRAFICI (STRATIGRAPHIC SURVEYS). It lists relevant literature and details about stratigraphic surveys.

